

DIY Guide for Woodfolds

What you will need

- Electric screw driver
- Spirit level
- Silicone lubricant spray
- Pencil

Step 1

Unpack door and lay flat on the floor



Step 2

Check track fit



Step 3

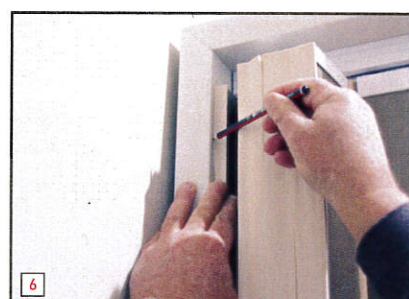
Spray silicone lubricant into track

Step 4

Slide the trolleys onto the track

Step 5

Lift door into place and screw track with 32x8 square head screws

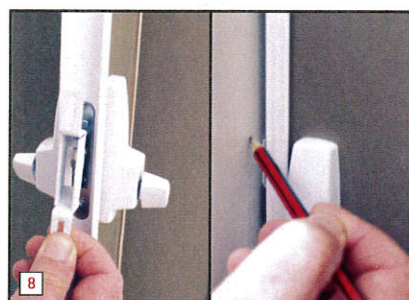


Step 6

Push door fully open and mark where the fixing flap sits

Step 7

Screw into place with 32x8 square head screws



Step 8

Hang catch onto hook, close door and mark for height

Step 9

Mark plumb line from centre of track and fix catch



Step 10

Fix post into place using 20x6 round head screws.